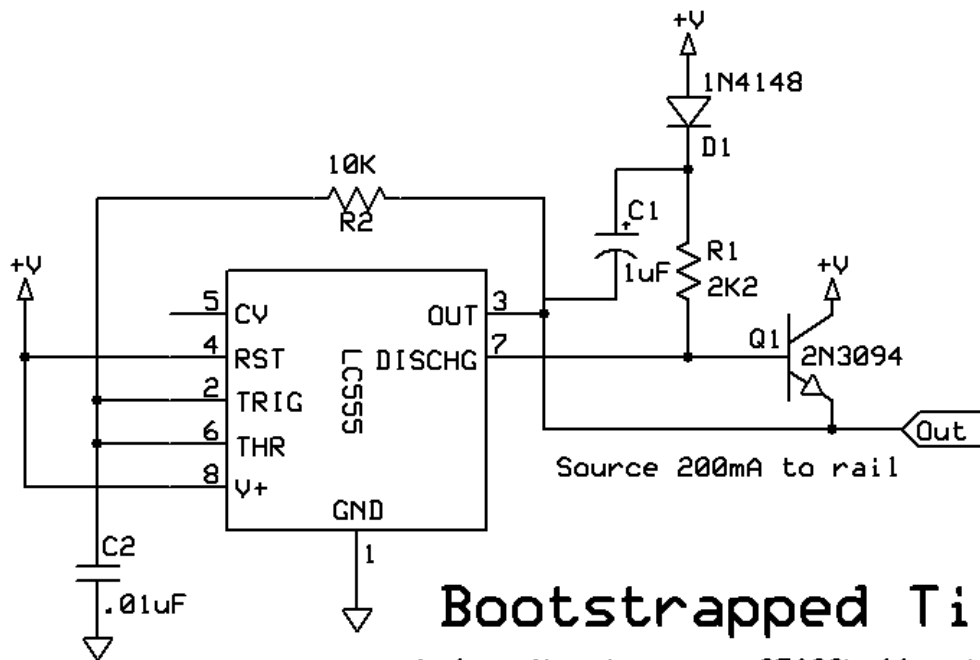


Category: Timer circuits

Bootstrapped Timer

This circuit demonstrates how to use bootstrapping to seriously boost the output power of the timer. The LC555 can only put out about 50mA as it is. This circuit can put out at least 200mA and goes to the rail as well. The LM555 timer puts out 300mA max, but doesn't go all the way to the rail. Replace Q1 with a big MOSFET, and you can put out big current with these few components.



Bootstrapped Timer

Andrew Morris morr3763@bellsouth.net