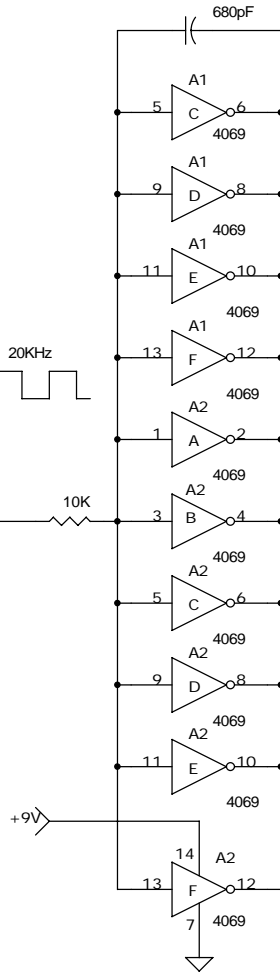
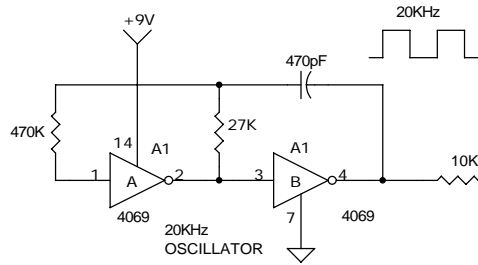
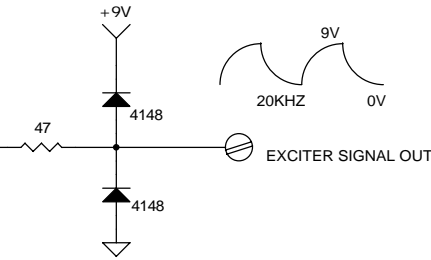
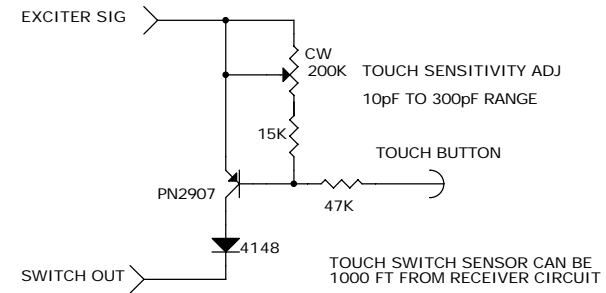


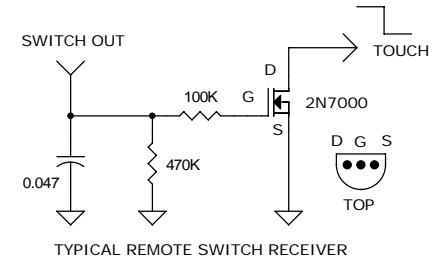
NOTE: A CONNECTION TO EARTH GROUND IS REQUIRED



TYPICAL REMOTE TOUCH SWITCH SENSOR



MAX LOAD CURRENT = 20mA
 MAX CAPACITANCE = 0.05uF
 ASSUMING 20pF/FT, MAX CABLE LENGTH = 2500 FT
 CIRCUIT SHOULD POWER ABOUT 50 REMOTE TOUCH SWITCHES



DESIGNED BY DAVE JOHNSON, PE
 DISCOVERCIRCUITS.COM
 ALL RIGHTS RESERVED

DRAWN BY: DAVE JOHNSON

12V TOUCH SWITCH EXCITER CIRCUIT

DAVID JOHNSON AND ASSOCIATES		
12V POWERED TOUCH SWITCH EXCITER CIRCUIT		
Size B	Document Number 12VEXC1.DSN	Rev A
Date: Monday, July 10, 2006	Sheet 0	of 0